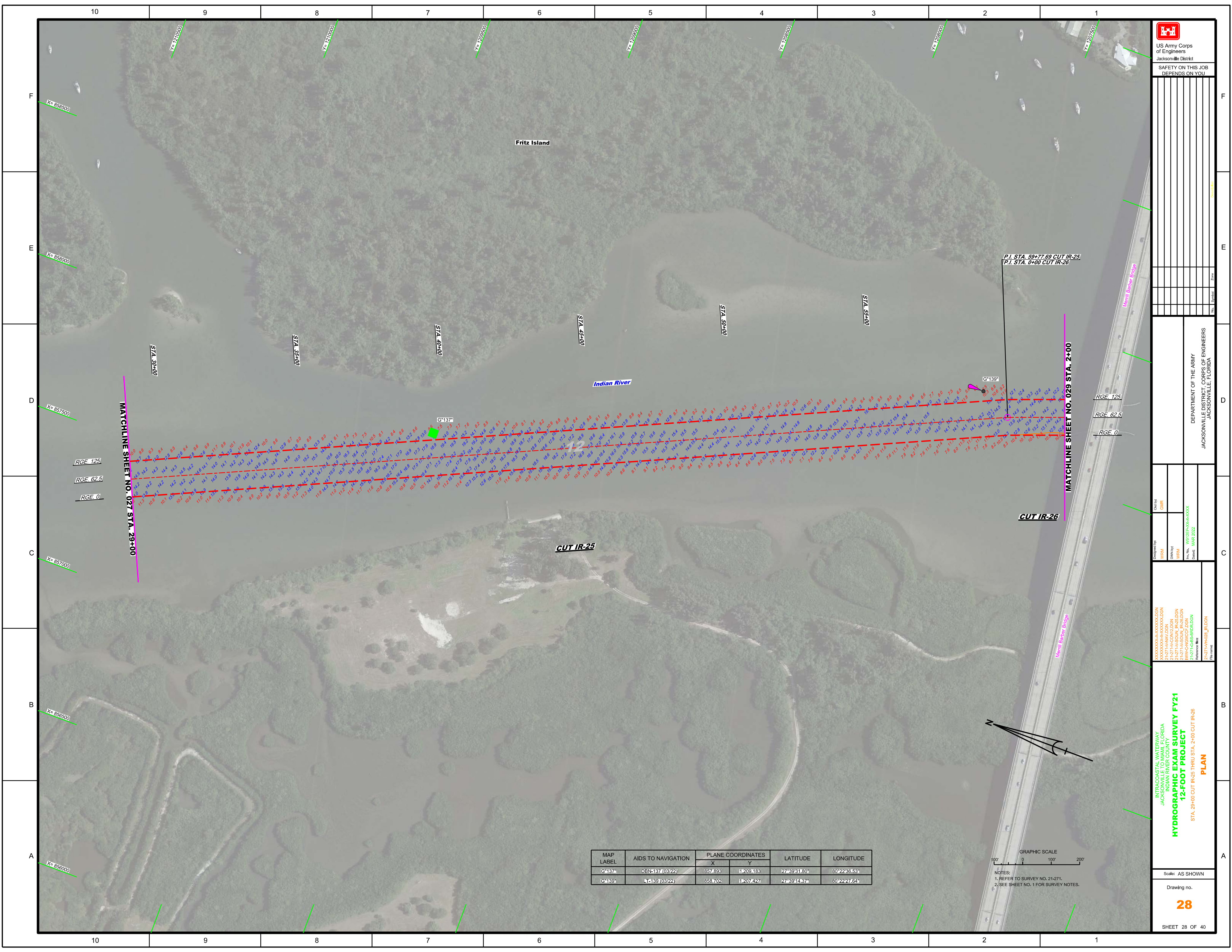



| MAP LABEL | AIDS TO NAVIGATION | PLANE COORDINATES | | LATITUDE | LONGITUDE |
|-----------|--------------------|-------------------|----------|--------------|--------------|
| | | X | Y | | |
| G115 | 115 (03/22) | 852,938 | 1223,209 | 27°42'50.87" | 80°28'35.16" |
| R116 | DBN116 (03/22) | 852,401 | 1223,761 | 27°42'45.84" | 80°28'36.54" |
| G117 | DBN117 (03/22) | 852,043 | 1223,800 | 27°42'41.54" | 80°28'30.64" |
| R118 | 118 (03/22) | 852,742 | 1223,189 | 27°42'20.85" | 80°28'32.89" |

GRAPHIC SCALE
 0 100 200
 NOTES:
 1. REFER TO SURVEY NO. 21-271.
 2. SEE SHEET NO. 1 FOR SURVEY NOTES.




 US Army Corps of Engineers
 Jacksonville District
 SAFETY ON THIS JOB
 DEPENDS ON YOU

DEPARTMENT OF THE ARMY
 JACKSONVILLE DISTRICT, CORPS OF ENGINEERS
 JACKSONVILLE, FLORIDA

Drawn by: GHR
 Checked by: GHR
 Designated by: WRM
 Design: MAR 2022
 File Name: 21-271-HYDRO_L_PLODGN

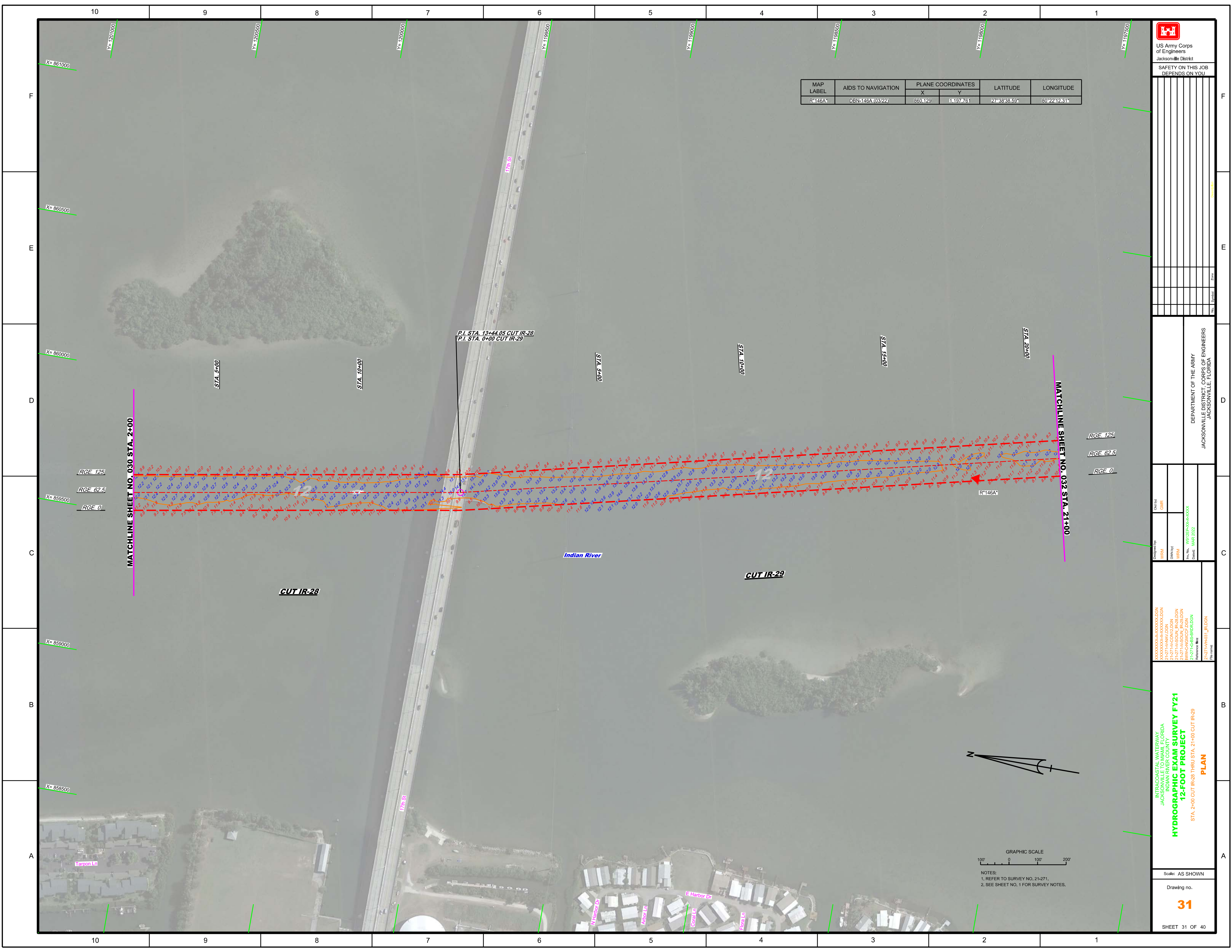
INTRACOASTAL WATERWAY
 JACKSONVILLE TO MIAMI, FLORIDA
 INDIAN RIVER COUNTY
HYDROGRAPHIC EXAM SURVEY FY21
12-FOOT PROJECT
 STA. 29+00 CUT IR-25 THRU STA. 2+00 CUT IR-26
PLAN

Scale: AS SHOWN
 Drawing no.
28
 SHEET 28 OF 40

| MAP LABEL | AIDS TO NAVIGATION | PLANE COORDINATES | | LATITUDE | LONGITUDE |
|-----------|--------------------|-------------------|----------|--------------|--------------|
| | | X | Y | | |
| G137 | DBN137 (03/22) | 857,893 | 1209,183 | 27°39'31.80" | 80°22'36.53" |
| G139 | DBN139 (03/22) | 858,702 | 1207,427 | 27°39'43.76" | 80°22'27.64" |



NOTES:
 1. REFER TO SURVEY NO. 21-271.
 2. SEE SHEET NO. 1 FOR SURVEY NOTES.



| MAP LABEL | AIDS TO NAVIGATION | PLANE COORDINATES | | LATITUDE | LONGITUDE |
|-----------|--------------------|-------------------|----------|--------------|--------------|
| | | X | Y | | |
| R*146A* | DBN-146A (03/22) | 860.129 | 1197.761 | 27°38'38.59" | 80°22'12.31" |

US Army Corps of Engineers
Jacksonville District
SAFETY ON THIS JOB
DEPENDS ON YOU

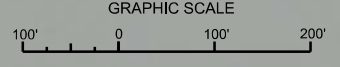
DEPARTMENT OF THE ARMY
JACKSONVILLE DISTRICT, CORPS OF ENGINEERS
JACKSONVILLE, FLORIDA

Checked by: GHR
Designed by: WRM
Drawn by: WRM
File No: W81255-000-0000
Date: MAR 2022

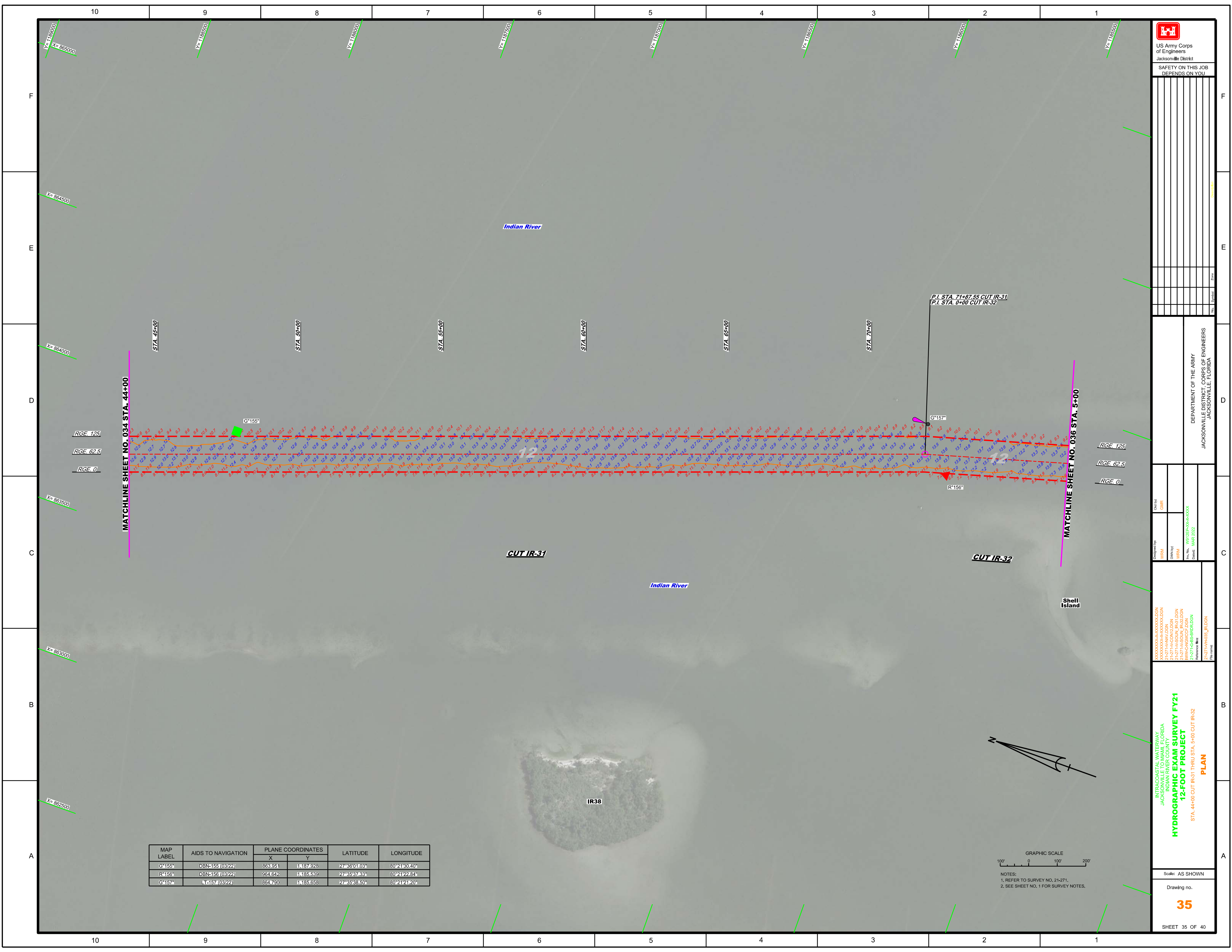
XXXXXXXXXXXXXXXXXXXX
XXXXXXXXXXXXXXXXXXXX
XXXXXXXXXXXXXXXXXXXX
21-271-0001-IR-28.DGN
21-271-0001-IR-29.DGN
21-271-0001-IR-28.DGN
21-271-0001-IR-29.DGN
Reference files:
21-271-0001-IR-28.DGN
21-271-0001-IR-29.DGN

INTRACOASTAL WATERWAY
JACKSONVILLE TO MIAMI, FLORIDA
INDIAN RIVER COUNTY
HYDROGRAPHIC EXAM SURVEY FY21
12-FOOT PROJECT
STA. 2+00 CUT IR-28 THRU STA. 21+00 CUT IR-29
PLAN

Scale: AS SHOWN
Drawing no.
31
SHEET 31 OF 40



NOTES:
1. REFER TO SURVEY NO. 21-271.
2. SEE SHEET NO. 1 FOR SURVEY NOTES.





 US Army Corps of Engineers
 Jacksonville District
 SAFETY ON THIS JOB
 DEPENDS ON YOU

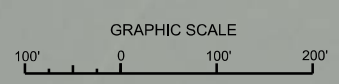
DEPARTMENT OF THE ARMY
 JACKSONVILLE DISTRICT, CORPS OF ENGINEERS
 JACKSONVILLE, FLORIDA

Checked by: GHR
 Designed by: WRM
 Drawn by: WRM
 File No.: W81255-000-0000
 Date: MAR 2022

INTRACOASTAL WATERWAY
 JACKSONVILLE TO MIAMI, FLORIDA
 INDIAN RIVER COUNTY
HYDROGRAPHIC EXAM SURVEY FY21
12-FOOT PROJECT
 STA. 44+00 CUT IR-31 THRU STA. 5+00 CUT IR-32
PLAN

Scale: AS SHOWN
 Drawing no.
35
 SHEET 35 OF 40

| MAP LABEL | AIDS TO NAVIGATION | PLANE COORDINATES | | LATITUDE | LONGITUDE |
|-----------|--------------------|-------------------|---------|--------------|--------------|
| | | X | Y | | |
| G*155* | DBN-155 (03/22) | 863951 | 1187928 | 27°39'01.06" | 80°21'30.40" |
| R*156* | DBN-156 (03/22) | 864642 | 1185539 | 27°35'37.33" | 80°21'22.84" |
| G*157* | DBN-157 (03/22) | 864790 | 1185658 | 27°35'38.50" | 80°21'21.20" |



NOTES:
 1. REFER TO SURVEY NO. 21-271.
 2. SEE SHEET NO. 1 FOR SURVEY NOTES.

